

Continuous backflush screen changer

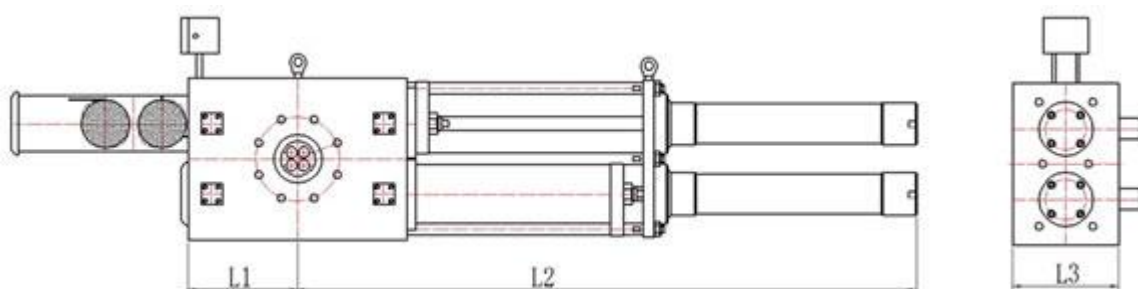
Backflush screen changers introduction:

Continuous backflush screen changer is double piston screen changer with four cavities designed for extrusion lines. **Backflush screen changers** are working simultaneously without stopping material flowing or mass production for its four filters.

Continuous backflush screen changer design and features:

- ◆ The design is four channels and four filters. The four filters are working simultaneously without stopping material flowing or mass production. Thus the non-stop screen changing can be achieved.
- ◆ The exhaust air system is able to fully discharge the air inside the material or perforated plate which is to be replaced. It can avoid air forming in the product during screen changing, thus improve the product quality.
- ◆ The backflush function can achieve non-stop backflushing filter. The filter can be recycled for more than 200 times.
- ◆ Four channel design greatly increase filtering area, and meet the higher quality or quantity production demand.
- ◆ Bigger filtering area is applicable for different material or extrusion products.
- ◆ The backflush screen changers have better sealing characteristics with rigid sealing. The service life is longer.
- ◆ It is applicable for high productivity, high efficiency, high quantity and continuous production of large extrusion plant.
- ◆ It is especially applicable for recycled plastics or large proportion of recycled plastic
- ◆ With its automatic cleaning filter function, the frequent screen changing can be avoided.
- ◆ The [piston hydraulic screen changer](#) can increase output and save energy consumption.
- ◆ We can customize various sizes or standards based on the client's requirement.
- ◆ It is configured with safety protection cover design.
- ◆ It has reasonable structure design, easier operation and better working effect.
- ◆ It is used for chemical fiber, blown film, flat film, cast film, pipe, plate, wire, fiber, granulating, recycling pelletizing, etc.

Backflush screen changers pictures, drawing, and technical data:



Melt Pumps:



Screen Changers:



Loss in Weight Feeders:



Control Systems:



Type	Output Kg/h	Size (mm)			Screen size		Heating tube		
		L1	L2	L3	Φ(mm)	cm ²	Quantity	V	KW
ZB-DPF-4R-120	260~760	180	1160	220	Φ100	78×4	6	230/400	1.0/1.3
ZB-DPF-4R-145	580~1400	225	1420	270	Φ125	123×4	6	230/400	2.0/2.4
ZB-DPF-4R-170	750~2000	260	1595	310	Φ150	177×4	6	230/400	3.0/3.5
ZB-DPF-4R-195	1350~3000	315	1890	380	Φ175	240×4	6	230/400	3.5/4.0
ZB-DPF-4R-220	1650~3800	350	2100	410	Φ200	314×4	10	230/400	3.5/4.0
ZB-DPF-4R-250	2100~5200	405	2395	460	Φ230	415×4	12	230/400	3.5/4.0
ZB-DPF-4R-280	4500~8500	450	2760	500	Φ250	490×4	12	230/400	4.2/5.0

Batte Main Products

Melt Pump Series:

- ★ [ZB-B standard extrusion melt pump](#)
- ★ [ZB-C reinforced melt pump for extrusion](#)
- ★ [ZB-D gear pumps for pipeline](#)
- ★ [ZB-E pressurized melt pump](#)
- ★ [ZB-F melt pump for reactor](#)
- ★ [ZB-H high pressure extruder pump](#)
- ★ [ZB-K polymer discharge gear pump](#)
- ★ [ZB-R extrusion rubber pump](#)

- ★ [RS double shaft rubber gear pump](#)
- ★ [ZB-U spinning pump](#)
- ★ [ZB-W chemical metering melt pump](#)
- ★ [ZB-X gear metering chemical pump](#)
- ★ [New type melt pump](#)
- ★ [Melt pump spare parts](#)
- ★ [PID control system for extruder](#)
- ★ [PLC control system for extrusion line](#)
- ★ [PDF download](#)

Screen Changer Series:

- ★ [Manual screen changer](#)
- ★ [Slide plate screen changer](#)
- ★ [Continuous piston screen changer](#)
- ★ [Continuous backflush screen changer](#)
- ★ [Automatic belt screen changer](#)
- ★ [Pelletizer filter without wire mesh](#)
- ★ [Screen changer spare parts](#)
- ★ [PDF download](#)

Loss in Weight Feeder Series:

(For granule, sheet, powder, liquid, etc.)

- ★ [Loss in weight screw feeder](#)
- ★ [Volumetric screw feeder](#)
- ★ [Liquid polymer feed system](#)
- ★ [Multi-component gravimetric feeders](#)
- ★ [Gravimetric feeder control system](#)
- ★ [Feeding system](#)
- ★ [PDF download](#)