

## ZB-B standard extrusion melt pump

### ZB-B Series Standard Extrusion Melt Pump:

ZB-B series **standard melt pumps** are mainly used for extruder or pressurization, stabilizing flow and transportation of medium or high viscosity polymer. This series of **extrusion melt pump** adopts electrical heating, and applies to PS, PP, PET, PVC, PC, PMMA, PA, ABS, PE-LLD, etc.



### Technical Parameter of ZB-B standard extrusion melt pump:

- ◆Material for [Melt Pump](#) Body: High temperature tool steel or chrome-nickel steel
- ◆Material for Gear: High temperature tool steel or nitrided steel
- ◆Material for Sliding Bearing: High temperature tool steel
- ◆Shaft Sealing: Spiral sealing or packing sealing spiral and packing sealing or other combined sealing;
- ◆Heating System: Electrical rod heating
- ◆Model/Volume Range: 0.5CC - 2500CC, 0.5cm<sup>3</sup>/rev - 2500cm<sup>3</sup>/rev

### Operating Parameter of standard melt pumps:

- ◆Theory: Positive Displacement Gear Pump
- ◆Structure: Gear Pump
- ◆Usage: Plastic, Rubber Pump and Fiber
- ◆Power: Electric or Oil
- ◆Fuel: No Need
- ◆Pressure: High Pressure
- ◆Volume Range: 0.5CC - 3200CC
- ◆Viscosity: ≤40000 Pa.s
- ◆Working Temperature: ≤400°C (750°F)
- ◆Cleaning Temperature: ≤450°C (850°F)
- ◆Outlet Pressure: 40MPa(6000psi)
- ◆Differential Pressure: ≤25Mpa



**Melt Pumps:**



**Screen Changers:**



**Loss in Weight Feeders:**



**Control Systems:**





## Batte Melt Pump Zhengzhou Co., Ltd

E-mail: [sales@battemachinery.com](mailto:sales@battemachinery.com)

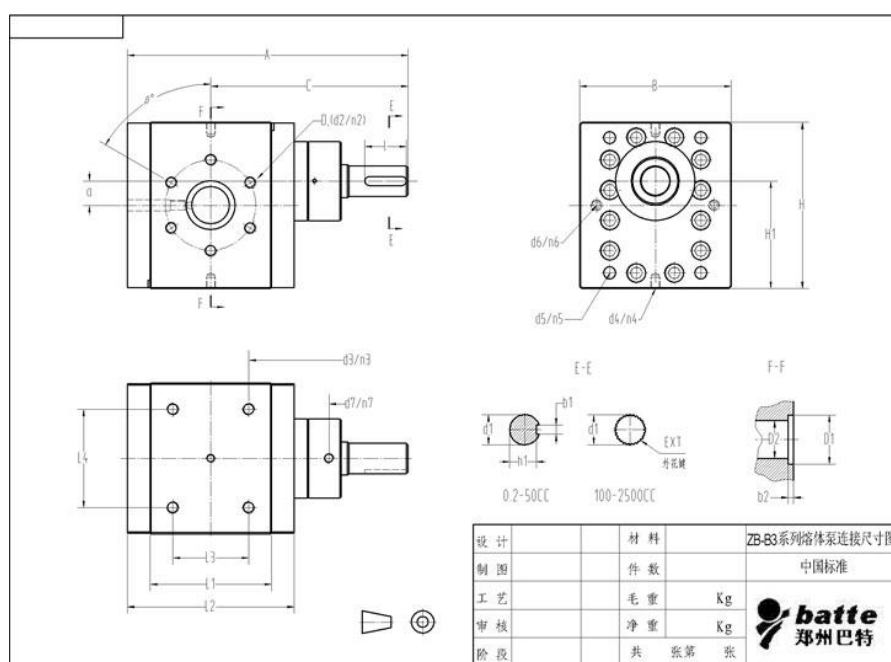
Address: No.11 Changchun Road, High-tech Zone, Zhengzhou, China

### Application of Batte melt pumps:

- ◆ Polymer extrusion molding, such as granulation, film, pipe, plate, sheet, etc.;
- ◆ High-viscosity materials such as PC, PMMA, ABS, HIPS, PET, PVB, PS, PP, PA, PE, PVA .etc.;
- ◆ Rubber, asphalt, paint, adhesives, coatings, lubricants, polyalcohol, non-particulate impurities;
- ◆ Polyester for cotton-fiber, polypropylene and other chemical fiber melt.

### Specifications and Drawing of ZB-B standard extrusion melt pump:

Type	CC/Rev	Capacity (L/H)	Heating power (kw)	Driven system (km)
ZB-0.2	0.2	0.1-0.6	0.5	0.37
ZB-1	1	0.5-3	1	0.5
ZB-2	2	1-6	1	0.75
ZB-5	5	2.5-15	1	1.1
ZB-10	10	5-30	1	1.5
ZB-20	20	10-60	2	2.2
ZB-31.5	31.5	15-90	2	3
ZB-50	50	25-150	3	4
ZB-100	100	50-300	4	5.5
ZB-150	150	75-450	5	7.5
ZB-200	200	100-600	6	11
ZB-250	250	125-750	8	15
ZB-315	315	150-900	8	18.5
ZB-500	500	250-1500	12	22
ZB-800	800	400-2400	15	30
ZB-1200	1200	600-3600	20	37
ZB-2500	2500	1300-7500	24	45
ZB-3200	3200	1600-9600	24	55
ZB-6200	6200	3000-18000	30	75



Melt Pumps:



Screen Changers:



Loss in Weight Feeders:



Control Systems:



[Home](#)

[About Us](#)

[Melt Pumps](#)

[Screen Changers](#)

[Loss In Weight Feeders](#)

[Principle](#)

[Service](#)

## Batte Main Products

### Melt Pump Series:

- ★ [ZB-B standard extrusion melt pump](#)
- ★ [ZB-C reinforced melt pump for extrusion](#)
- ★ [ZB-D gear pumps for pipeline](#)
- ★ [ZB-E pressurized melt pump](#)
- ★ [ZB-F melt pump for reactor](#)
- ★ [ZB-H high pressure extruder pump](#)
- ★ [ZB-K polymer discharge gear pump](#)
- ★ [ZB-R extrusion rubber pump](#)

- ★ [RS double shaft rubber gear pump](#)
- ★ [ZB-U spinning pump](#)
- ★ [ZB-W chemical metering melt pump](#)
- ★ [ZB-X gear metering chemical pump](#)
- ★ [New type melt pump](#)
- ★ [Melt pump spare parts](#)
- ★ [PID control system for extruder](#)
- ★ [PLC control system for extrusion line](#)
- ★ [PDF download](#)

### Screen Changer Series:

- ★ [Manual screen changer](#)
- ★ [Slide plate screen changer](#)
- ★ [Continuous piston screen changer](#)
- ★ [Continuous backflush screen changer](#)
- ★ [Automatic belt screen changer](#)
- ★ [Pelletizer filter without wire mesh](#)
- ★ [Screen changer spare parts](#)
- ★ [PDF download](#)

### Loss in Weight Feeder Series:

(For granule, sheet, powder, liquid, etc.)

- ★ [Loss in weight screw feeder](#)
- ★ [Volumetric screw feeder](#)
- ★ [Liquid polymer feed system](#)
- ★ [Multi-component gravimetric feeders](#)
- ★ [Gravimetric feeder control system](#)
- ★ [Feeding system](#)
- ★ [PDF download](#)